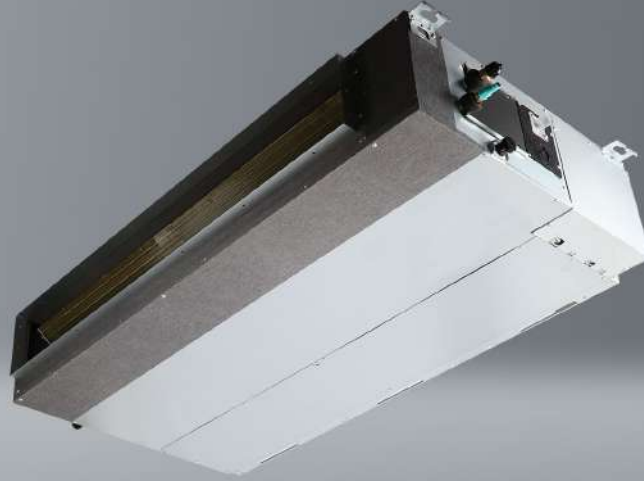


Ducted air conditioner

Nevo N100X ^[R14]



- SCOP 4,0
- Eco-friendly
- 20°C
- iClean
- iAIR filter
- PZH Certificate
- 5 year WARRANTY

- DEDICATED TO HEATING
- 1:1 SINGLE
- AIR ZONE

Unit features

SKY inverter Digital DC Inverter SKY®	Automatic purification iClean ⁽¹⁾⁽²⁾	Electrostatic HD iAIR filter	Turbo mode ⁽¹⁾	Wide-angle eMOTO air supply	Air supply eMOTO control system	Eco eMOTO mode ⁽¹⁾⁽²⁾	SMART wi-fi ⁽²⁾
Wired controller SMART port	Wireless remote control ⁽²⁾	Wired controller	SMART Follow mode	SMART heating to 8°C ⁽¹⁾⁽²⁾	Autorestart memory	Anti-corrosive gold fins	Drip tray heater
Compressor crankcase heater	Silence mode	Timer	Cooling at low outdoor temp. down to -15°C	Heating at low outdoor temp. down to -20°C	Double-sided condensate drainage	Self-diagnostics	Sleep mode ⁽²⁾
Integrated condensate pump	Fresh air supply ⁽²⁾	ON/OFF remote output	Alarm output	Weekly controller output	Central controller output	Adjustable static pressure	Additional air supply
BMS Modbus ⁽²⁾	BMS Bacnet ⁽²⁾	Air inlet in the back / from down	Remote controller IrDA receiver				

1. Feature not available in Multi Split system. 2. Feature is only optional.

Technical specification

Model				Nevo 10,6 kW	
Capacity	Cooling	Nom. (Min. - Max.)	W	10551 (2726-11781)	
Rated input		Nom. (Min. - Max.)	W	4000 (890-4200)	
Operating current		Nom. (Min. - Max.)	A	6,8 (1,5-7,1)	
Capacity	Heating	Nom. (Min. - Max.)	W	11723 (2784-12836)	
Rated input		Nom. (Min. - Max.)	W	3250 (780-4000)	
Operating current		Nom. (Min. - Max.)	A	5,5 (1,3-6,8)	
Reversible heat pump type				air-to-air	
Design load in cooling mode			kW	10,6	
SEER			W/W	6,1	
Energy efficiency class, cooling				A++	
Annual electric energy consumption, cooling			kWh/a	608	
Design load in heating mode (T _{biv} -7°C)			kW	8,8	
SCOP			W/W	4,0	
Energy efficiency class, heating				A+	
Annual electric energy consumption, heating			kWh/a	3080	
Dehumidification			l/h	3,8	
Maximum energy consumption			W	5000	
Maximum operating current			A	8,4	
Indoor unit				N100Xi R14	
EAN product code				5905567601934	
Fan speed	T / H / M / L	rpm	1100 / 1000 / 950 / 900		
Air flow	T / H / M / L	m³/h	2100 / 1800 / 1650 / 1500		
Sound pressure level	T / H / M / L	dB(A)	50,5 / 49 / 47 / 42,5		
Sound power level		dB(A)	61		
Rated input		W	380		
Operating current		A	1,7		
ESP - External static pressure	Standard	Pa	37		
	Range	Pa	0 - 160		
Net dimensions	W × D × H	mm	1360 × 774 × 249		
Gross dimensions	W × D × H	mm	1570 × 805 × 330		
Net weight / Gross weight		kg	40,5 / 48,2		
Condensate drain		mm	25		
Outdoor unit				UO100Xo R14	
EAN product code				5905567601583	
Fan speed	H / M / L	rpm	950 / 850 / 700		
Maximum air flow		m³/h	4000		
Sound pressure level		dB(A)	62		
Sound power level		dB(A)	70		
Net dimensions	W × D × H	mm	946 × 410 × 810		
Gross dimensions	W × D × H	mm	1090 × 500 × 885		
Bracket spacing	W × D	(mm)	673 × 403		
Net weight / Gross weight		kg	75.5 / 80		
Refrigerant	Type		R32		
	GWP		675		
	≤ 5m	kg	2,4		
		TCO ₂ eq	1,62		
Charged (> 5m)	g/mb	24			
Pipe connections	Liquid/Gas	mm (inches)	"Φ9,52 / Φ15,9 (3/8" / 5/8")"		
Maximum installation length		m	75		
Maximum height difference		m	30		
Compressor type				Rotary DC	
Type of outdoor unit power supply			V-Hz, Ø	380-420-50, 3φ	
electrical protection			A	C10/3	
Power cables: outdoor unit			pcs × mm²	5 × 2,5	
Control and power cables: indoor unit - outdoor unit			pcs × mm²	4 × 1	
Indoor operating range (cooling / heating)			°C	16~32 / 0~30	
Outdoor operating range (cooling / heating)			°C	-15~50 / -20~24	
Compatible systems					
1:1 SINGLE				•	
1:2 DUAL					
1:X MULTI					